



MANUAL USER

CODE 060714

Manual user

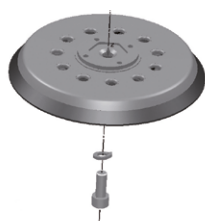
ASSEMBLING

The brands are used only as reference



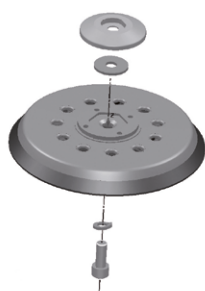
050150 GENIO Pneumatic sander 150 mm Ø5 mm
050151 GENIO Pneumatic sander 150 mm Ø2,5 mm

- Remove the central annex
- Maintain black washer Ø24 mm.
- Black screw 5/ 16" with waved washer.



051820 ES516 6/3 Electrical sander 3 mm Shine Mate
051821 ES516 6/5 Electrical sander 5 mm Shine Mate

- Remove the central annex and internal metal washer.
- Silver screw 5/16" with waved washer.
- Fit in the hexagone of the plate with the hexagone of the machine.



Festool (All models - Except Rotex R0)
3M Electric (64384-64380)
Rupes RH353 A

- Assembling prepared from manufacturer ready for use.
- Silver screw M.8 with wave washer.
- Silver washer Ø24 mm + Grey annex.



INDASA Pneumatic & electric
3M Elite

- Remove the central annex and internal metal washer.
- Black screw 5/ 16" with waved washer.
- Fit in the hexagone of the plate with the hexagone of the machine.

Manual user

ASSEMBLING

The brands are used only as reference



Rupes RX 153 A

Dynabrade Extrem and 59029

- Remove the central annex.
- Maintain silver washer Ø24 mm.
- Black screw 5/16" with waved washer.

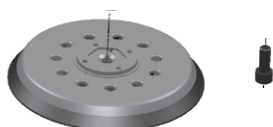
Rest of pneumatic machines

- Remove the central annex and washer to fit in directly.
- Use the silver or black fiber washer to avoid friction in the plate.

Metabo SXE150 BL

Mirka DEROS 650 CV

- Remove the central annex.
- Remove metallic internal washer.
- Introduce the black fiber washer and fit in the hexagone of the plate with the machine.
- Use black screw 5/16" with waved washer.



Metabo SXE450 Turbotec

Würth / Dewalt

- Assembling prepared from manufacturer ready for use.
- Screw M.8.